



# RATE DICH DURCHS DORF

Quizparcours Engelberg

Welcome to the “**Rate dich durchs Dorf**” quiz trail, the winter version of the “Spiel dich durchs Dorf” game trail, which can of course be played all year round.

Written and pictorial clues will guide you through our village. There are questions to answer along the way. Along the way, you will also learn interesting stories from Engelberg's past. Stopping for refreshments or shopping along the way is definitely allowed. Have fun!

Choose one of the 3 starting points and look for it in the course (the course works as a loop):

- 1 Klosterhof Kloster Engelberg (p.1)
- 2 Viktoriagärtli next to Tourist Information (p.2)
- 3 Kurpark (p.3)
- 4 Eilipark next to the train station (p.4)




- 1 You are standing in the monastery courtyard.

**1:** In the lower part of the meadow in front of the cheese store you can see a large fountain. What shape is the basin?

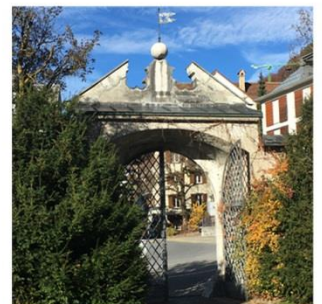
- 1: Round
- 2: Square
- 3: Octagonal

*Engelberg Monastery was founded in 1120 by Konrad von Sellenbüren. According to legend, he harnessed an ox to a beam in order to build a monastery where it stopped. The ox remained standing here. This is why the people of Engelberg call the slope with the ski lift behind the monastery Ochsenmatte.*

(If you can't see it because there is a lot of snow, you will find the answer on the last page (6) in 

Now walk up the path to the wrought-iron gate that leads you out of the monastery courtyard. 

After the gate, turn right and look up to the church.



**2:** How many of the long steps do you count up to the church?

- 1: 15
- 2: 25
- 3: 35

*Our baroque church (dating from 1745) is well worth a visit. It houses the largest organ in Switzerland, and the colorful mosaic in the middle of the church aisle is considered a place of power.*

Go back down the church steps and continue straight ahead on the right-hand side of the road. After a right-hand bend, you will be in front of the Tal Museum. 

**3:** Which family crests on the house contain moons?

- 1: Infanger, Kuster, Hess, Töngi
- 2: Hurschler, Dillier, Waser, Amstutz
- 3: Hess, Töngi, Dillier, Waser

*This house, also known as the Wappenhaus, was built in 1786/87. It is a very typical Engelberg farmhouse with a brick base and log construction. Inside you can learn interesting facts about Engelberg's past.*



From the Tal Museum, carefully cross the road to Viktoriagärtli

*The Hotel Hug was built in 1901 and converted into the Hotel Victoria with 100 beds in 1904. In 1939, the hotel fell victim to a devastating fire in which 3 men died. Today, the Tourist Information Center stands on this site. Only the small park, the Viktoriagärtli, remains as a reminder of the long-gone hotel.*

2



Continue past the Gärtli into the pedestrian zone. Follow Dorfstrasse until you are under this sign.



**4:** In what year was the house built? If you look up, you will find the answer.

- 1: 1854
- 2: 1864
- 3: 1954



*This part is the oldest part of the Hotel Engelberg, which today consists of several buildings. There used to be a goat stable and cheese dairy here.*



Continue for about 35 steps and you will now be standing in front of a brown house.

**5:** Below the second floor you can see a slogan in Engelberg German. What does it say?

- 1: Wer auf Gott verbaut, hat gut getraut / Those who build on God have trusted well
- 2: Wer an Gott verkauft, hat gut gebaut / Those who sell to God have built well
- 3: Wer auf Gott vertraut, hat gut gebaut / Those who trust in God have built well



Another 25 steps further on you will come to a very old brown house.

*The "Brandstättehaus" was built in 1752. A special feature is the painting of the Madonna on the left at the level of the 2nd floor. The purpose of the painting is a "Leychähirmi". This referred to the place where the corpse was laid down for a moment to pray and change the pallbearers at a funeral. Ghirmen is an Engelberg expression for resting.*



Continue along the arcades until you reach this house:



*During the Spanish flu of 1918, the municipal council decided to set up an emergency hospital in Villa Alpenblick, as the hospital in Barmettlen was already fully occupied. A total of around 170 patients were cared for at Villa Alpenblick. In Engelberg, 18 people died of the Spanish flu, including many young men.*

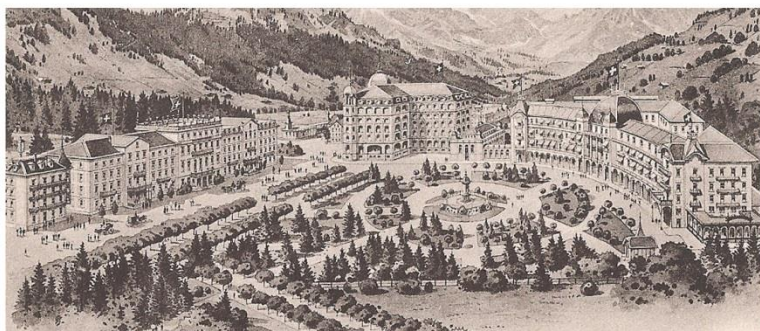
Your path continues along Dorfstrasse. At the end of the cobblestones, continue along the right-hand side of the road and you will come to the Kurpark. **3** Here you are in front of the new 5\* hotel, which integrates the former Hotel Europe (formerly Winterhaus) and the Kursaal.

**6:** How many of these small arched windows can you make out on the old part of the hotel (left side of the building)?



- 1: 9
- 2: 12
- 3: 16

*The large hotels used to be located around the Kurpark. On the right is the Kuranstalt (1898), in the middle the Winterhaus (1905, the first hotel designed for winter tourism), between them the Kursaal (1903) and on the left the Hotel Titlis (1865). At this time, Engelberg was very popular as a health resort among the wealthy and famous.*



Now you have two options:

1. you take a slightly longer route, get to know a rather unknown part of Engelberg and solve 2 additional tasks. You continue under the next arrow.
2. continue along the Kurpark and turn left at the next junction to Eilipark opposite the train station. You scroll on to starting point 3 (p.4)

Cross the park, go past the pavilion and step out onto the Alte Gasse on the other side. Turn left here and follow the road, which soon goes slightly uphill until it flattens out a little and you see this yellow house on the left.

*This street called alte Gasse used to be the main road into Engelberg. It became a side road with the construction of a road to Engelberg (1878).*



**7:** The name of this house hides:

- 1: An item of clothing and a hairstyle
- 2: A place and a plant
- 3: A star and a name

40 steps after the swimming pool signpost, go left down the stairs, past the dairy and continue along the road for approx. 200m to the T-junction. Turn left here and shortly afterwards you will be in front of the Protestant church.

**8:** How many lancet windows can you see on the three facades visible from the street?

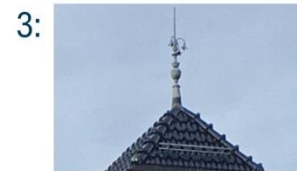
- 1: 10
- 2: 15
- 3: 13

*The German Protestant church was built in 1889. The Basel architect Paul Reber (1835-1908), known for his sacred buildings in a historicizing style, designed the building on the initiative of German guests. The church was handed over to the Reformed community of Engelberg in 1959.*



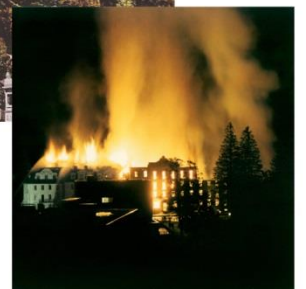
Continue along this road to the crossroads and then turn right across the road to the little park called Eilipark. **4**

**9:** Stand in front of the board with the signposts. What can you not see from here?



Looking at the board, turn left and then right at the next turning. On the way you will pass the Hotel H+. The Hotel Titlis used to stand on this site.

*The Hotel Titlis was opened in 1865. It marks the beginning of the grand hotel industry in Engelberg. The hotel was enlarged several times and finally had 200 beds around 1900. In 1968, the then empty building burned down.*



After the hotel, you will soon come to a Y-junction with a pedestrian crossing.

**10:** Don't cross it, but quickly count how many stripes it has. (If it is not visible because of snow, you will find the solution on the last page (6) in the right-hand margin).

- 1: 5
- 2: 6
- 3: 7



Now turn right and continue on this side of the road. Watch out for the parking meters and stop at the 3rd meter.



You should see this building on the opposite side of the road.



**11:** Which detail in the photo on the right has been changed from the original?

- 1: Chimney
- 2: Roof
- 3: Window



*On the site of the Bierlialp Park development used to be a meadow. Among other things, the annual rope pulling tournament took place on the so-called Ollinger Mätteli.*

Now continue along this street until you reach the Store Stohr Wohnungsgeschäft. Cross the road carefully and walk about 50 steps into the one-way street until you are in front of the brown house with the yellow extension and the green shutters.

**12:** What is the house number of this house?

- 1: Titlisstrasse 6
- 2: Titlisstrasse 9
- 3: Titlisstrasse 5



*The name Pfisterhüsli is derived from the former name Klosterpfistererei, which means monastery bakery, and that was precisely the purpose of this house in the 19th century. The current house was built in 1910 and was gently renovated in 2020.*

Turn around, walk back to the road and along the parking lot to this information board:

**13:** What number does Sporting Park have on the schedule?

- 1: 70
- 2: 40
- 3: 50



If you started in the monastery courtyard, you are now finished with the tour and can calculate the solution code on the last page. Otherwise, continue under the arrow.



Continue along the parking lot to the monastery courtyard and enter it. Then turn to page 1 and continue at starting point 1.

You've almost made it! Now you need to do a little more calculating.

You will get the solution if you take the number before the answer (1, 2 or 3) and calculate with it:

Digit 1: Answer 1 \_\_\_ - Answer 2 \_\_\_ + Answer 3 \_\_\_ = Digit 1

Digit 2: Answer 4 \_\_\_ + answer 5 \_\_\_ = \_\_\_ x answer 6 \_\_\_ = digit 2

Digit 3: If you have gone the extra mile and solved the two extra tasks, you only need to add these 2 answers (from 7 and 8) and you have the 3rd digit.

All others calculate as follows:

Answer 9 \_\_\_ x Answer 10 \_\_\_ = \_\_\_ - Answer 11 \_\_\_ + Answer 12 \_\_\_ + Answer 13 \_\_\_ = Number 3



You can find out whether you have all the answers correctly on the homepage at the bottom of the page under "Guess your way through the village", or ask at the tourist information office.

Many thanks to Nicole Eller Risi from the Tal Museum for the historical information and pictures. Thanks to Claudia Christen from the Engelberg rope pulling club for the picture of the Ollinger Mätten. You can view all historical pictures in larger size on our homepage at [www.spiel-engelberg.ch/rate-dich-durchs-dorf/historische-bilder/](http://www.spiel-engelberg.ch/rate-dich-durchs-dorf/historische-bilder/)

We hope you had a lot of fun solving the quiz. If you would like to discover our village in a different way, you can do so in the summer when the motto is:

Play your way through the village. From the end of May to the middle of October, the play trail is open again and you can play your way through the village at 16 stations.

You can find more information on our homepage: [www.spiel-engelberg.ch](http://www.spiel-engelberg.ch)

Frage 1: Brunnen 8-eckig, Antwort 3  
Frage 10: Fussgängerstreifen 6 Streifen, Antwort 2



A project of the Engelberg village community  
supported by the municipality of Engelberg and Engelberg Titlis Tourism

